



# Flt-1 Monoclonal Antibody

<b>Catalog No</b>	YP-Ab-12927
<b>Isotype</b>	IgG
<b>Reactivity</b>	Human
<b>Applications</b>	WB;ELISA
<b>Gene Name</b>	FLT1
<b>Protein Name</b>	Vascular endothelial growth factor receptor 1
<b>Immunogen</b>	Purified recombinant extracellular fragment of human Flt-1 fused with hlgGfc tag expressed in HEK293 cells.
<b>Specificity</b>	Flt-1 Monoclonal Antibody detects endogenous levels of Flt-1 protein.
<b>Formulation</b>	Ascitic fluid containing 0.03% sodium azide,0.5% BSA, 50%glycerol.
<b>Source</b>	Monoclonal, Mouse
<b>Purification</b>	Affinity purification
<b>Dilution</b>	Western Blot: 1/500 - 1/2000. ELISA: 1/10000. Not yet tested in other applications.
<b>Concentration</b>	1 mg/ml
<b>Purity</b>	≥90%
<b>Storage Stability</b>	-20°C/1 year
<b>Synonyms</b>	FLT1; FLT; FRT; VEGFR1; Vascular endothelial growth factor receptor 1; VEGFR-1; Fms-like tyrosine kinase 1; FLT-1; Tyrosine-protein kinase FRT; Tyrosine-protein kinase receptor FLT; FLT; Vascular permeability factor receptor
<b>Observed Band</b>	
<b>Cell Pathway</b>	[Isoform 1]: Cell membrane; Single-pass type I membrane protein. Endosome. Autophosphorylation promotes ubiquitination and endocytosis.; [Isoform 2]: Secreted.; [Isoform 3]: Secreted.; [Isoform 4]: Secreted.; [Isoform 5]: Cytoplasm.; [Isoform 6]: Cytoplasm.; [Isoform 7]: Cytoplasm.
<b>Tissue Specificity</b>	Detected in normal lung, but also in placenta, liver, kidney, heart and brain tissues. Specifically expressed in most of the vascular endothelial cells, and also expressed in peripheral blood monocytes. Isoform 2 is strongly expressed in placenta. Isoform 3 is expressed in corneal epithelial cells (at protein level). Isoform 3 is expressed in vascular smooth muscle cells (VSMC).
<b>Function</b>	alternative products:Additional isoforms seem to exist,catalytic activity:ATP + a [protein]-L-tyrosine = ADP + a [protein]-L-tyrosine phosphate.,function:Receptor for VEGF, VEGFB and PGF. Has a tyrosine-protein kinase activity. The VEGF-kinase ligand/receptor signaling system plays a key role in vascular development and regulation of vascular permeability. Isoform SFlt1 may have an inhibitory role in angiogenesis.,similarity:Belongs to the protein kinase superfamily. Tyr protein kinase family.,similarity:Belongs to the protein kinase superfamily. Tyr protein kinase family. CSF-1/PDGF receptor



subfamily.,similarity:Contains 1 protein kinase domain.,similarity:Contains 7 Ig-like C2-type (immunoglobulin-like) domains.,subunit:Interacts in vitro with various phosphotyrosine-binding proteins, including PLC-gammas, PTPN11, GRB2, CRK and NCK1.,tissue specificity:Mostly in normal lung, but also

## Background

This gene encodes a member of the vascular endothelial growth factor receptor (VEGFR) family. VEGFR family members are receptor tyrosine kinases (RTKs) which contain an extracellular ligand-binding region with seven immunoglobulin (Ig)-like domains, a transmembrane segment, and a tyrosine kinase (TK) domain within the cytoplasmic domain. This protein binds to VEGFR-A, VEGFR-B and placental growth factor and plays an important role in angiogenesis and vasculogenesis. Expression of this receptor is found in vascular endothelial cells, placental trophoblast cells and peripheral blood monocytes. Multiple transcript variants encoding different isoforms have been found for this gene. Isoforms include a full-length transmembrane receptor isoform and shortened, soluble isoforms. The soluble isoforms are associated with the onset of pre-eclampsia.[provided by RefSeq, May 2009],

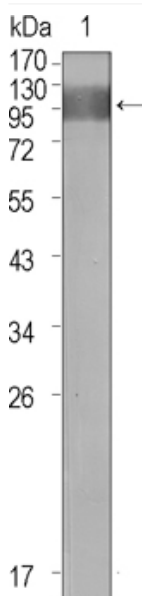
## matters needing attention

Avoid repeated freezing and thawing!

## Usage suggestions

This product can be used in immunological reaction related experiments. For more information, please consult technical personnel.

## Products Images



Western Blot analysis using Flt-1 Monoclonal Antibody against extracellular domain of human Flt-1.